

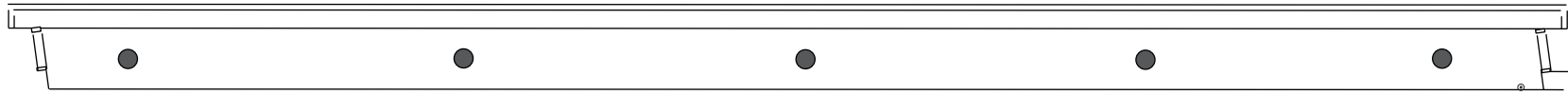
Revision
09

CHARLES W. EISEMANN CENTER
FOR PERFORMING ARTS AND CORPORATE PRESENTATIONS
2351 Performance Drive, Richardson, TX, 75082 972/744-4600
GREEN MEZZANINE GALLERY

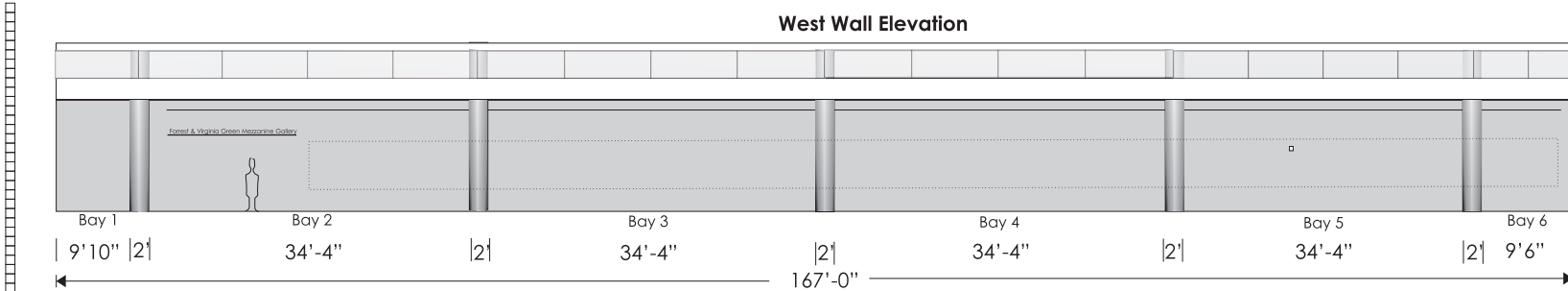
Gallery Hours:

Mon - Sat
10 am - 6 pm
and during anytime
the building is open
for events.
Exhibitions change
each month

Wall plan view



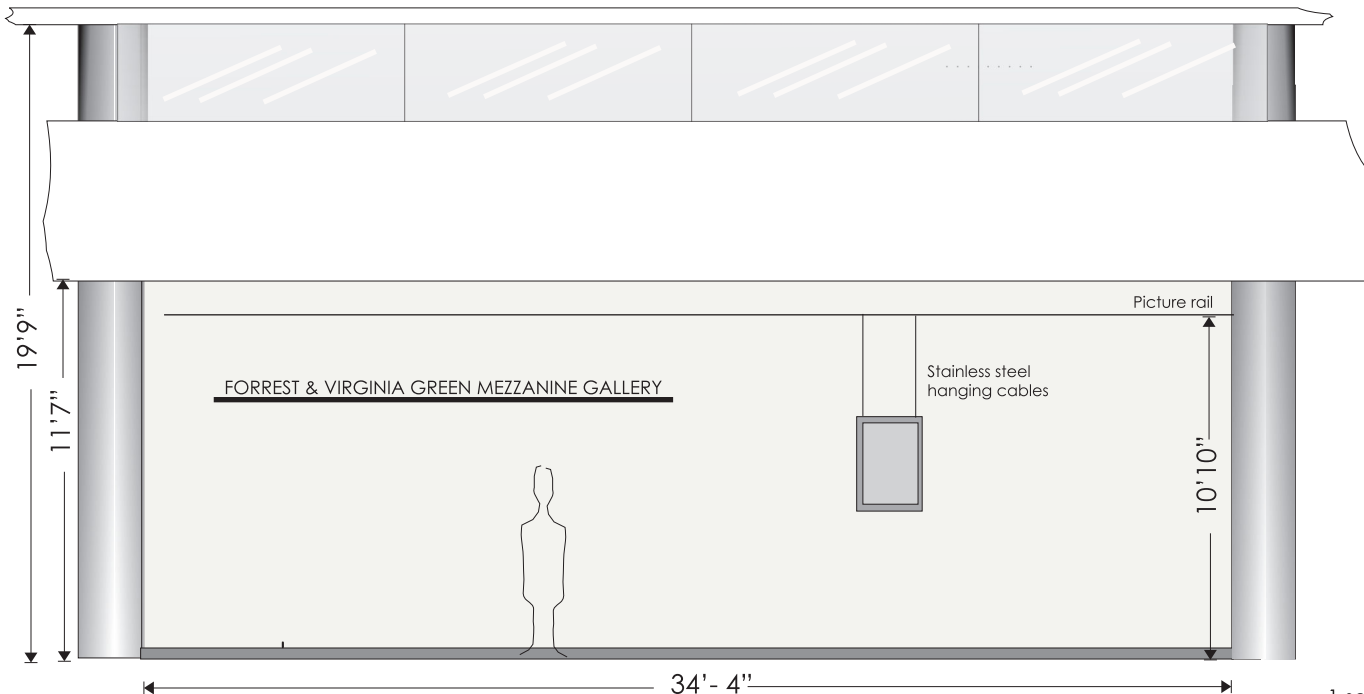
West Wall Elevation



1 square = 1'-0"

Total wall Space = 2,111 sq. ft. or 182.5 liner feet
Exhibit Space is defined as the useable wall space 2.5 ft from the floor up to 7.5 ft.
Bay 1 = 0 sq. ft. Bay 5 = 170 sq. ft. (as indicated by the dotted line)
Bay 2 = 95 sq. ft. Bay 6 = 45 sq. ft.
Bay 3 = 170 sq. ft. Bay 7 = 75 sq. ft.
Bay 4 = 170 sq. ft. Total exhibit space is 725 sq. ft
or 142 liner feet of wall space

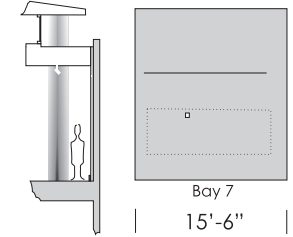
Detail elevation



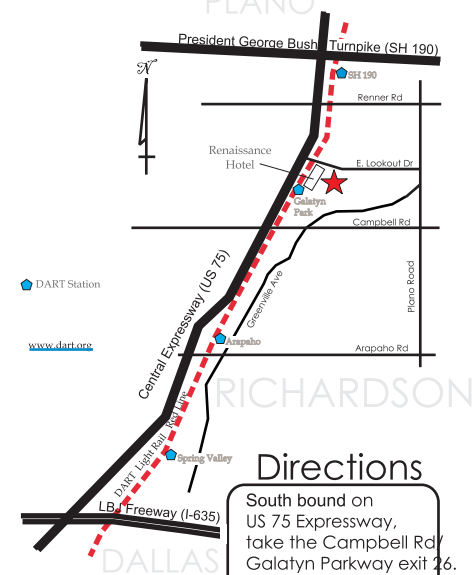
Scale
1 square = 1'-0"

Section

North Wall



LOCATION MAP



Directions

South bound on US 75 Expressway, take the Campbell Rd/ Galatyn Parkway exit 26. Turn left onto overpass that becomes Galatyn Parkway, then left on Performance Drive.
North bound on US 75 Expressway, take the Renner Rd/ Galatyn Parkway exit 27A. Turn right onto Galatyn Parkway, then left on Performance Drive.