

BANK OF AMERICA HALL

Meetings-Banquets-Receptions

Lighting

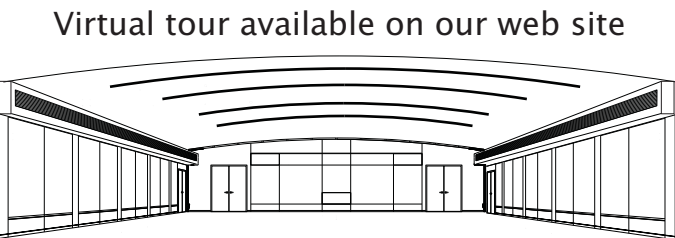
- Control: ETC Unison four preset touch screen
- 28 ETC Sensor Dimmers
- 70 - 90 watt par 38 track lights
- Additional stage lights may be added at an additional cost.

Sound

- Main Mixing Console: Crest X8-24RT
- BSS Soundweb DSP's
- Renkus-Heinz speakers w/McCauley AC-588 Subwoofer
- QSC CX Amplifiers
- 2-Tannoy T112 Monitors
- FM - Assisted Hearing System
- House Mix Position in rear of room
- CD, Cassette, Mini Disc & DAT Play back
- 2 wired microphones included

Video

- 1- Sharp XG-V10WU Multimedia Projector 4700 ANSI Lumens, twin UHP lamp source
- 12'X12' Stewart Model "A" Screen
- Computer interface to projector Extron RGB 192 interface
- Maximum resolution: XGA 1024 x 768
- DVD&VHS player



See the room in color at eisemanncenter.com

Room Statistics

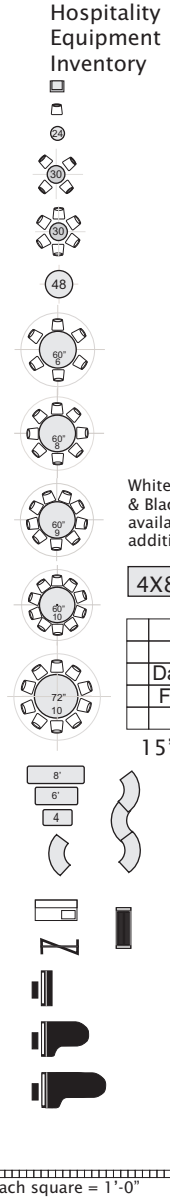
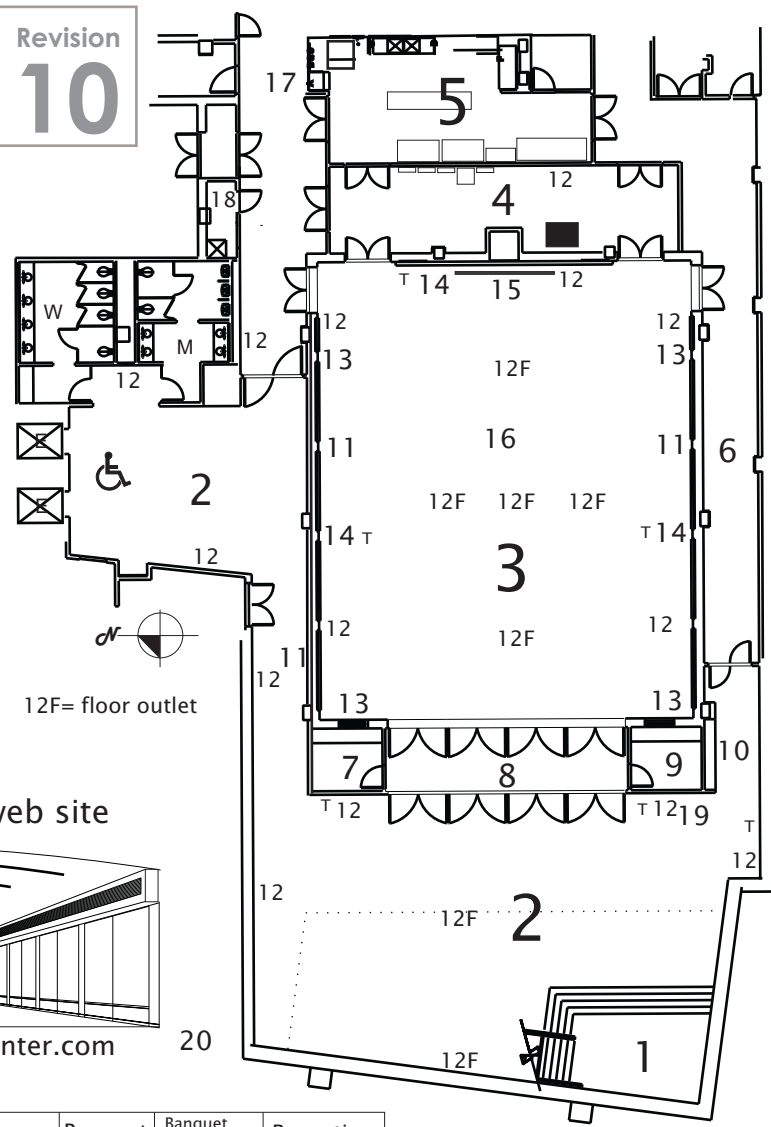
Sq.Ft.	Dimensions	Ceiling Ht.	Theater	Classroom	Banquet	Banquet w/Dance Fl	Reception
3,150	50'X63'	10'7" -12'-5"	300	180	200	170	300*

* Includes TXU Lobby

Map Legend

- | | | | | |
|-------------------|------------------------|----------------------|--------------------------------|-------------------------------|
| E= Elevator | 1. Grand Stair Landing | 6. Service Hallway | 11. Broadcast Panel | 16. Video Projector |
| M W = Rest Rooms | 2. TXU Lobby | 7. Control Room | 12. 20a./120v. Electric outlet | 17. Hall to catering elevator |
| T= Telephone Jack | 3. Countrywide Hall | 8. Sound Lock | 13. 20a/3ph Electric outlet | 18. Mop/sink room |
| | 4. Chair Storage | 9. Tech Support Room | 14. AV Connection Panel | 19. 27"video monitor |
| | 5. Prep Kitchen | 10. Pay Phone | 15. Projection screen | 20. ATM located in the lobby |

Revision
10

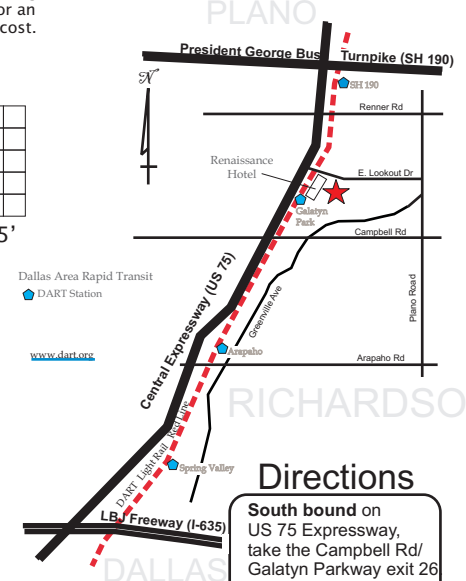


Prep Kitchen (5)

- 1-Manitowoc 1000 lbs. Ice Machine
- 3-Compartment, Stainless steel sink
- 1-Hand washing station
- 1-Victory Reach-in refrigerator
- 1-Victory Reach-in freezer
- 2-Victory Roll-in refrigerators
- 1-Victory Roll-in heated cabinet
- 8' Stainless steel work table
- 4' Stainless steel rolling work table
- Wire storage shelving
- 2-Stainless steel rolling bars
- 4-Cambro poly bars
- 3-Tray racks with 36 trays
- 1-Commercial Microwave

Note this is not vented as a cooking kitchen. There is no grease trap. Approved caterer's list available on our web site.

LOCATION MAP



Directions

South bound on US 75 Expressway, take the Campbell Rd/ Galatyn Parkway exit 26 Turn left onto overpass that becomes Galatyn Parkway, then left on Performance Drive.

North bound on US 75 Expressway, take the Renner Rd/ Galatyn Parkway exit 27A. Turn right onto Galatyn Parkway, then left on Performance Drive.

Note: clients are reminded that the lighting and sound inventory is provided as a courtesy at no additional charge. Every effort is made to keep our equipment in good working order. However, some equipment may not be available every time. Designers are asked to allow 10% for loss or repair. Inventory numbers are a guideline not a guarantee.

Rev 05.01.09